

Owner:
Rush Lifetime Homes

General Contractor:
C.L. Lewis

Architect:
Community Design Studio, LLC

Size:
24 units in 8 buildings; 33,054 total gross square feet

Resident Characteristics:

- Units rented to income-qualified individuals with disabilities

On-site Amenities:

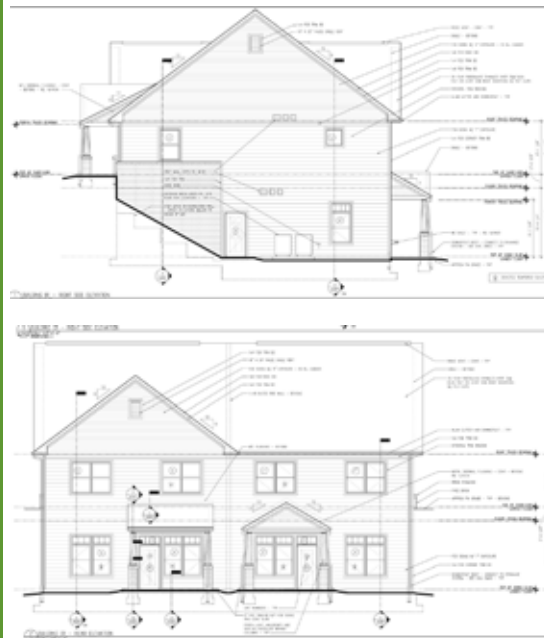
- 100% accessible

Green Features:

- Designed and built to meet EarthCraft™ of Virginia standards
- Metal roofs
- Pre-finished Fiber Cement Board siding
- Low VOC paints and finishes
- Fiberglass windows
- Bamboo flooring
- Ceramic tiles
- Effective R-24 exterior wall insulation
- Hybrid water heaters
- 16 SEER heat pumps
- Energy Recovery Ventilator (ERV) units

Anticipated Completion Date:

Spring 2011



Project Highlights

Victoria Ridge is a 24-apartment development in Lynchburg, Virginia that will provide 12 fully accessible apartments to individuals with physical disabilities and 12 apartments built using universal design components. The project utilizes universal design to promote accessibility for individuals of all ages and abilities.

The community is also being designed and built to meet Earth Craft™ of Virginia standards and will feature many sustainable elements such as hybrid water heaters, low-VOC paints and finishes, bamboo flooring, metal roofs, fiberglass windows, and fiber cement board siding.

